



www.newtonlabs.com

4160 Imager 4160-IR Imager Newton Labs Vision System Controlled RS170 (NTSC) Color Camera



Specifications

Format	RS170A (NTSC)
Image Sensor	1/4 Inch Color CCD
Effective Picture Elements	510 Horizontal x 492 Vertical
Minimum Illumination	2 Lux
Signal to Noise Ratio	Greater Than 45dB
Sync System	Internal/External (Vision System Controlled)
IR Sensitive	4160 IRD- IR Sensitive 4160 Non-IR Sensitive
White Balance	Auto or Fixed (Vision System Controlled)
Shutter Speed	1/60 to 1/10,000 (Vision System Controlled)
Power	12 VDC @ 200mA
Lens Mount	CS Mount
Weight	12 Oz (340 grams)
Operating Environment	-5 Degrees C to +45 Degrees C
Minimum-Maximum Storage Environment	-20 Degrees C to +70 Degrees C
Adjustments	Vision System Controlled
Optional Lens Iris Control	Vision System Controlled
Connections	Newton Labs Imager Cable

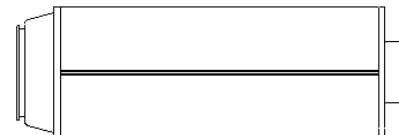
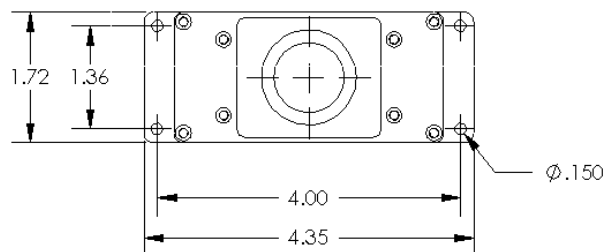
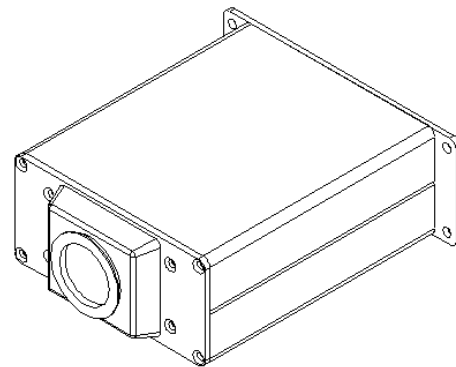
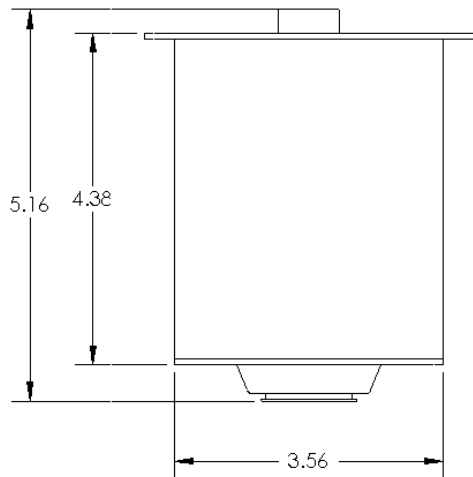
All adjustable Imager functions are designed to be controlled by a Newton Labs Vision System. Consult the Newton Labs Software Component Users guide for the details of the available Imager adjustments in your specific application



www.newtonlabs.com

4160 Imager 4160-IR Imager

**Newton Labs Vision System Controlled
RS170 (NTSC) Color Camera**

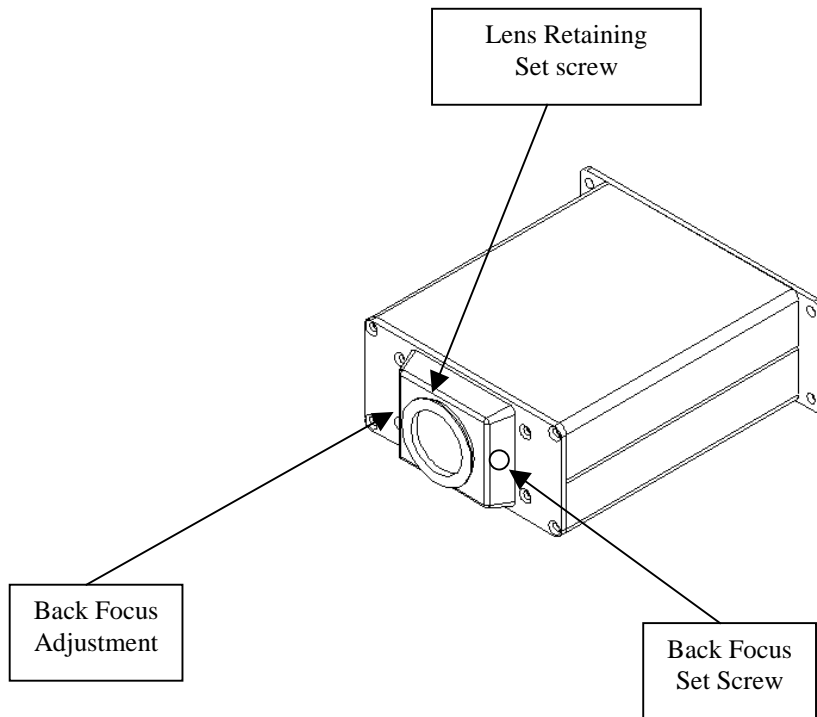


All adjustable Imager functions are designed to be controlled by a Newton Labs Vision System. Consult the Newton Labs Software Component Users guide for the details of the available Imager adjustments in your specific application

4160 Imager

4160-IR Imager

Lens Removal and Back Focus Adjustment



Lens Removal and Replacement

- ◆ Loosen Back Focus Set Screw.
- ◆ Rotate Back Focus Adjustment Screw to move the focus ring to the fully extended position. This will expose the Lens Set Screw.
- ◆ Loosen the Lens Set Screw.
- ◆ Remove Lens.
- ◆ Reverse to replace Lens.

Back Focus Adjustment

If the standard focus range on the lens is not adequate for your application, additional focus range may be available with the use of the Back Focus Adjustment. To adjust the Back Focus:

- ◆ Loosen Back Focus Set Screw.
- ◆ Rotate Back Focus Adjustment Screw to move the focus ring to the desired position.
- ◆ Retighten Back Focus Set Screw.